

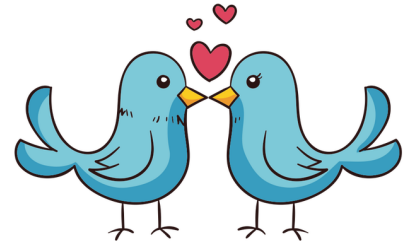
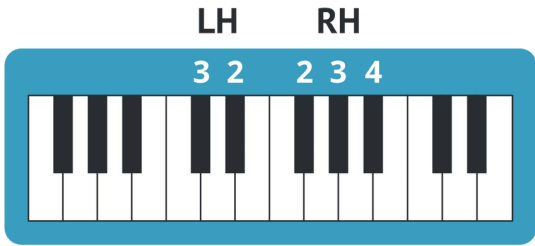
Lovebird

LULLABY

WunderKeys Method Books

Musical notation for the first system of the lullaby. It consists of two staves: a Right Hand (RH) staff and a Left Hand (LH) staff. The RH staff contains a whole note chord with a finger number '2' above it. The LH staff contains two pairs of eighth notes, each pair with a finger number '3' and '2' below it.

Musical notation for the second system of the lullaby. It consists of two staves: a Right Hand (RH) staff and a Left Hand (LH) staff. The RH staff contains a whole note chord with a finger number '3' above it. The LH staff contains two pairs of eighth notes, each pair with a finger number '3' and '2' below it.



Handwriting practice for the first staff. The staff is divided into two parts: LH (Left Hand) and RH (Right Hand). The LH part contains two notes: a quarter note on the first line (finger 3) and a quarter note on the second line (finger 2). The RH part contains four measures: the first measure has a quarter note on the fourth line (finger 4); the second measure has a quarter note on the third line (finger 3); the third measure has two quarter notes on the second line (finger 2); the fourth measure has two quarter notes on the third line (finger 3).

Handwriting practice for the second staff. The staff is divided into two parts: LH (Left Hand) and RH (Right Hand). The LH part contains four notes: a quarter note on the first line (finger 3), a quarter note on the second line (finger 2), a quarter note on the first line (finger 3), and a quarter note on the second line (finger 2). The RH part contains three measures: the first measure has a quarter note on the fourth line (finger 4); the second measure has a quarter note on the third line (finger 3); the third measure has a half note on the second line (finger 2).


 Happy Valentine's Day