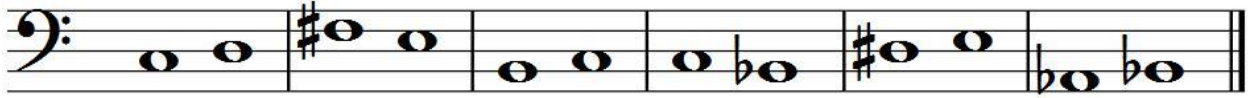




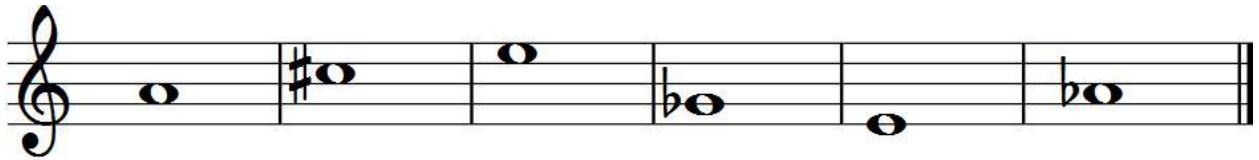
Struck By Cupid's Arrow

Identifying Half Steps and Whole Steps

1. Write "H" for **half step** or "W" for **whole step** beneath each measure.



2. In each measure below, draw a whole note that is a **whole step above** the given note.



3. Write "H" for **half step** or "W" for **whole step** beneath each measure.



4. In each measure below, draw a whole note that is a **half step below** the given note.

